

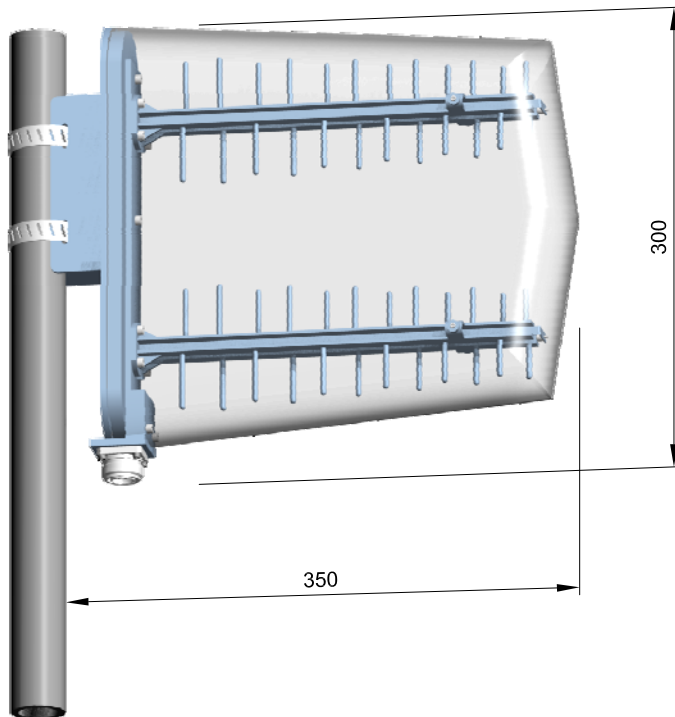
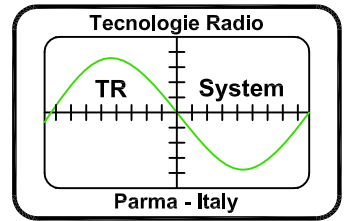
# Directive Log-Periodic System

Band 1710 ÷ 1880 MHz

Gain 14,5 dBi

Pol. V

mod. TRS-1198



## Electrical data

Frequency	1710+1880 MHz
Polarization	Vertical
VSWR	≤ 1,22
Impedance	50 Ω
Connector	7/16" female
Max Power In	200 Watt
Gain	14,5 dBi
Front to Back	≥ 20 dB
Third order intermodulation	≤ -155 dBc

(Related to the connector 7/16")

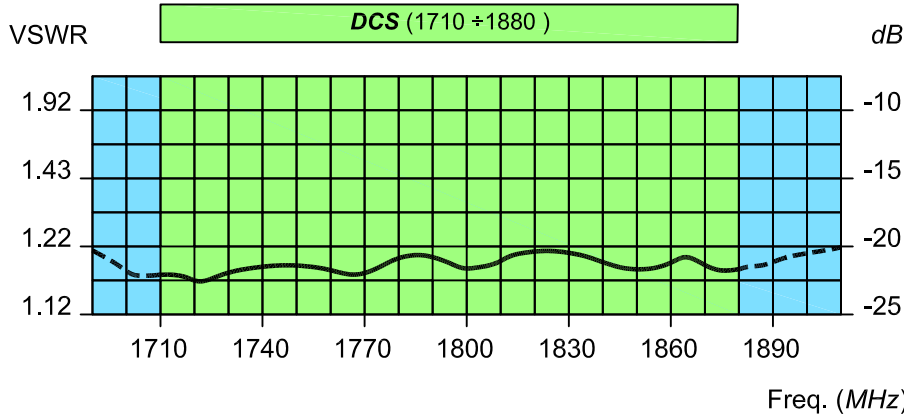
## Half-power beam width -3 dB

Horizontal	56°
Vertical	26°

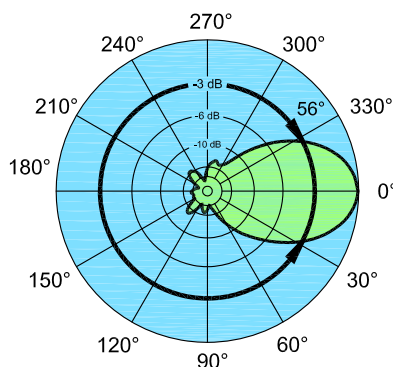
## Mechanical data

Dimensions [mm]	350 x 300 X 100
Weight	3 Kg
Wind surface Lateral	0,10 m <sup>2</sup>
Wind load Lateral	at 180 Km/h 115 N
Colour	RAL 7001
Radome	Transparent metacrylate
Material	Al alloy, Cu alloy, Inox, PTFE
Mounting Pipe	ø40+60 mm

All part are made according to



### Horizontal



### Vertical

