

Coaxial Amplifier

ZHL-1A

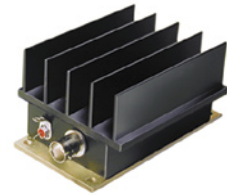
50Ω Medium High Power 2 to 500 MHz

Features

- wideband, 2 to 500 MHz
- high IP3, +38 dBm typ.
- medium high power, +28 dBm min.

Applications

- VHF/UHF
- test set-ups
- instrumentation



BNC version shown
CASE STYLE: S32

Connectors	Model	Price	Qty.
BNC	ZHL-1A	\$229.00	(1-9)
SMA	ZHL-1A-S	\$239.00	(1-9)

Amplifier Electrical Specifications

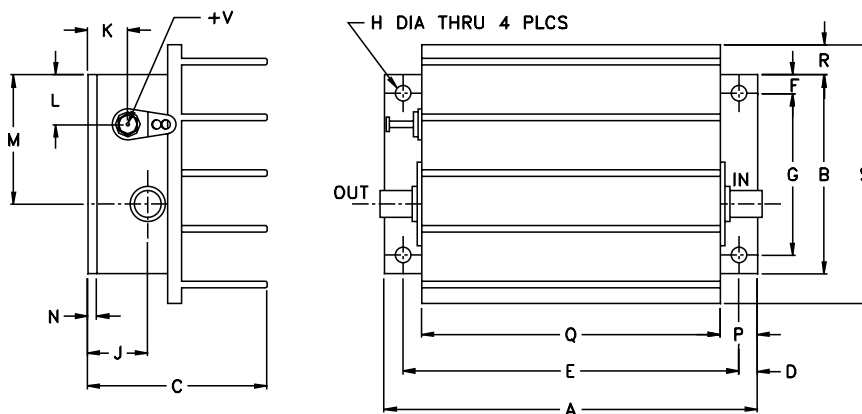
MODEL NO.	FREQUENCY (MHz)		GAIN (dB)		MAXIMUM POWER (dBm)		DYNAMIC RANGE		VSWR (:1) Max.		DC POWER	
	f_L	f_U	Min.	Flatness Max.	Output (1 dB Compr. min.)	Input (no damage)	NF (dB) Typ.	IP3 (dBm) Typ.	In	Out	Volt (V) Nom.	Current (A) Max.
ZHL-1A	2	500	16	±1.0	+28	+20	11.0	+38	2.0	2.0	24	0.6

Open load is not recommended, potentially can cause damage.
With no load derate max input power by 20 dB

Maximum Ratings

Operating Temperature	-20°C to 65°C
Storage Temperature	-55°C to 100°C
DC Voltage	+24.5V Max.

Outline Drawing



Outline Dimensions (inch/mm)

A	B	C	D	E	F	G	H	J
3.75	2.00	1.8	.19	3.375	.19	1.625	.144	.50
95.25	50.80	45.72	4.83	85.73	4.83	41.28	3.66	12.70
K	L	M	N	P	Q	R	S	T
.40	.50	1.30	.10	.38	3.00	.30	2.60	.80 g
10.16	12.70	33.02	2.54	9.65	76.20	7.62	66.04	20.32 ;



INTERNET <http://www.minicircuits.com>

P.O. Box 350166, Brooklyn, New York 11235-0003 (718) 934-4500 Fax (718) 332-4661

Distribution Centers NORTH AMERICA 800-654-7949 • 417-335-5935 • Fax 417-335-5945 • EUROPE 44-1252-832600 • Fax 44-1252-837010

Mini-Circuits ISO 9001 & ISO 14001 Certified

REV. A
M103461
ZHL-1A
060210
Page 1 of 2

FREQUENCY (MHz)	GAIN (dB)			DIRECTIVITY (dB)			VSWR (:1)		NOISE FIGURE (dB)	POUT at 1 dB COMPR. (dBm)
	23V	24V	24.5V	23V	24V	24.5V	IN	OUT		
2.00	17.10	17.13	17.15	12.50	12.50	12.50	1.28	1.27		30.24
4.00	17.12	17.15	17.17	12.50	12.50	12.40	1.28	1.26		30.24
11.00	17.12	17.15	17.15	12.50	12.50	12.50	1.28	1.26	8.25	29.99
30.60	17.10	17.13	17.14	12.60	12.70	12.50	1.30	1.26	8.21	30.13
85.00	17.15	17.19	17.20	12.80	12.90	12.80	1.40	1.28	8.26	29.66
180.80	17.50	17.56	17.56	13.60	13.50	13.50	1.66	1.30	8.02	29.08
219.10	17.55	17.61	17.64	14.40	14.30	14.20	1.72	1.31	8.01	29.17
257.40	17.58	17.65	17.67	14.80	14.80	14.70	1.70	1.31	8.05	29.86
282.90	17.50	17.55	17.59	15.10	14.80	15.00	1.67	1.27	8.11	30.31
308.50	17.36	17.41	17.45	15.10	15.20	15.10	1.64	1.22	8.17	30.39
346.80	17.41	17.49	17.52	14.40	14.50	14.30	1.59	1.19	8.20	30.68
385.10	17.53	17.60	17.63	13.30	13.20	13.20	1.57	1.14	8.18	30.68
423.40	17.55	17.63	17.66	12.00	12.00	12.10	1.62	1.18	8.18	30.78
461.70	17.42	17.51	17.54	11.30	11.20	11.30	1.68	1.30	8.27	30.37
500.00	16.99	17.09	17.11	11.50	11.30	11.30	1.73	1.41	8.51	29.64

