

Coaxial Amplifier

ZHL-1000-3W

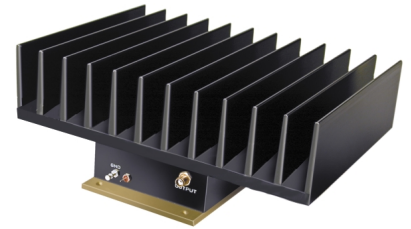
50Ω High Power 3W 500 to 1000 MHz

Features

- wideband, 500 to 1000 MHz
- high power output, +35 dBm min.
- high IP3, +45 dBm typ.
- high gain, 43 dB typ.
- protected by US Patent, 6,943,629

Applications

- VHF
- cellular
- instrumentation
- laboratory



CASE STYLE: DDD131			
Connectors	Model	Price	Qty.
SMA	ZHL-1000-3W	\$695.00	(1-9)

Electrical Specifications

MODEL NO.	FREQ. (MHz)		GAIN (dB)		MAXIMUM POWER OUTPUT (dBm)		DYNAMIC RANGE		VSWR (-1) Typ.		DC POWER	
	f_L	f_U	Min.	Flatness Max.	(1 dB Compr.) Min.	Input (no damage)	NF (dB) Typ.	IP3 (dBm) Typ.	In	Out	Volt (V) Nom.	Current (A) Max.
ZHL-1000-3W	500	1000	38	±1.0*	+35**	0	3.5	+45	2.0	2.5	24	2.25

* 1.5 dB over temperature range -20°C to +65°C

** +37 dBm typical.

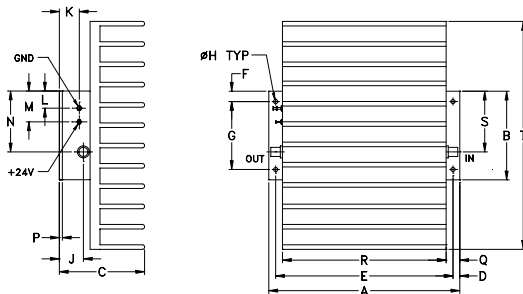
Open load is not recommended, potentially can cause damage.

With no load derate max input power by 20 dB

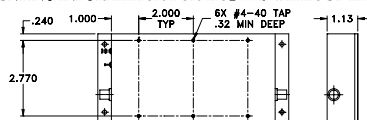
Maximum Ratings

Operating Temperature	-20°C to 65°C
Storage Temperature	-55°C to 100°C
DC Voltage	+25V Max.

Outline Drawing



MOUNTING INFORMATION FOR MODELS WITHOUT HEATSINK



Outline Dimensions (inch/mm)

A	B	C	D	E	F	G	H	J	K	L	M	N	P	Q	R	S	T	wt
7.00	3.25	3.13	.25	6.500	.38	2.500	.156	.88	.43	.62	1.00	2.63	.125	.50	6.00	2.23	8.35	grams*
177.80	82.55	79.50	6.35	165.10	9.65	63.50	3.96	22.35	10.92	15.75	25.40	66.80	3.18	12.70	152.40	56.64	212.09	1780

*510 grams without heatsink



P.O. Box 350166, Brooklyn, New York 11235-0003 (718) 934-4500 Fax (718) 332-4661 For detailed performance specs & shopping online see Mini-Circuits web site



The Design Engineers Search Engine Provides ACTUAL Data Instantly From MINI-CIRCUITS At: www.minicircuits.com

RF/IF MICROWAVE COMPONENTS

REV. D
M109526
ZHL-1000-3W
080303
Page 1 of 2

FREQUENCY (MHz)	GAIN (dB)			DIRECTIVITY (dB)	VSWR (:1)		NOISE FIGURE (dB)	POUT at 1 dB COMPR. (dBm)	IP3 (dBm)
	23V	24V	24.5V		24V	IN			
500.00	43.44	43.51	43.57	33.21	1.64	1.22	3.60	37.59	47.32
550.00	43.44	43.53	43.60	39.42	1.53	1.32	3.63	37.59	47.36
600.00	43.64	43.73	43.81	35.50	1.30	1.52	3.63	37.77	47.29
650.00	43.49	43.57	43.66	34.29	1.21	1.63	3.57	37.75	46.09
700.00	43.86	43.93	44.01	34.55	1.30	1.74	3.61	37.08	45.12
750.00	44.17	44.23	44.31	44.04	1.34	1.77	3.53	36.75	44.66
800.00	44.48	44.54	44.62	38.17	1.31	1.77	3.46	36.78	44.74
850.00	44.65	44.70	44.77	52.63	1.30	1.77	3.50	36.31	45.06
900.00	44.73	44.78	44.84	45.00	1.34	1.81	3.53	36.72	44.83
950.00	44.86	44.91	44.98	53.07	1.33	1.86	3.53	36.50	44.91
1000.00	44.89	44.95	45.04	42.88	1.19	1.88	3.55	36.24	44.26

