

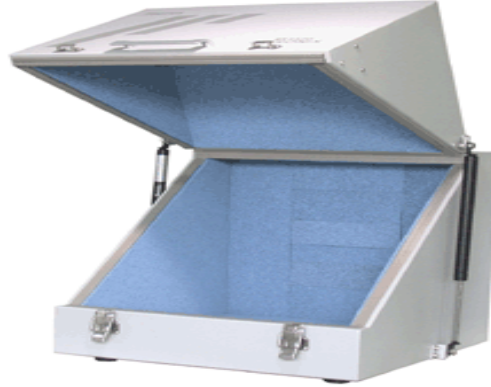
EMC SHC-LAP

TABLE TOP SHIELDED CHAMBER

Technical Specifications

Operating Frequency	DC – 20 GHz
Shielding performance	>60 dB up to 120 dB*
Outer Dimensions	80(L) x 50(W) x 50(H) cm
DUT MAX Size	70 x 40 x 40 cm

* variable with frequency and depending on the option installed



Key features

- Engineered and completely manufactured in Italy
- Ruggedized INOX steel and ERGAL construction
- Unique compact space-saving design
- Can host larger DUTs
- Completely modular
- Wideband High effective RF shielding
- Excellent quality – Military standard

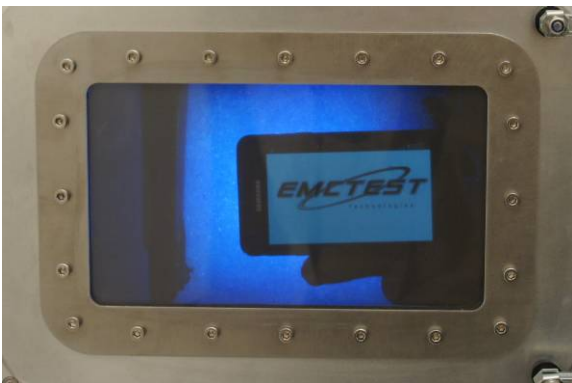
Applications

- Specifically designed for telecom application
- Ideal for routers, laptops etc..
- Precompliance Tests (Radiation and Immunity)
- Path loss measurements
- Receiver sensitivity test
- Any sensitive measurements where shielding is needed
- Easily upgradable

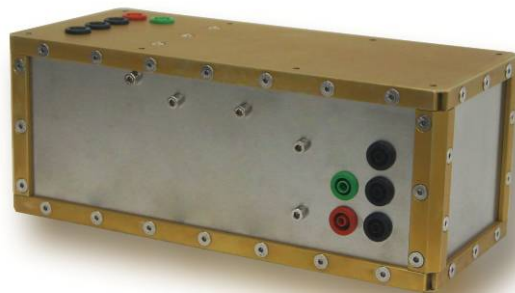
Product Description

Designed specifically for laptops and other sized ISM or GSM/UMTS communication devices, it is projected in CAD and CNC constructed with tolerances as 0.09 mm to maintain an exceptionally well shielded environment. Heavy duty, rugged 1.5 mm INOX steel is used throughout and high performance fabric non tissue gaskets are used at all joint locations assuring a reliable RF tight closure. Oversized hinges and latches together with our patented dual trapezoidal door coupling layout in ERGAL are used to provide a physically tight seal. The interior is optionally equipped with RF plain absorbers that provide a typical RF attenuation of -90dB @ 3GHz. Input/output connections and options can be configured to match any specific need thanks to a modular technical panel. Unit can host line filters for AC and DC power supplies up to 1000 V and a variety of options.

Options



SHW - Shielded Window



PLF-20S - Power Line Filter

Information presented is subject to change without notice as product improvements are made. Contact EMCTEST or visit our homepage for current specifications.

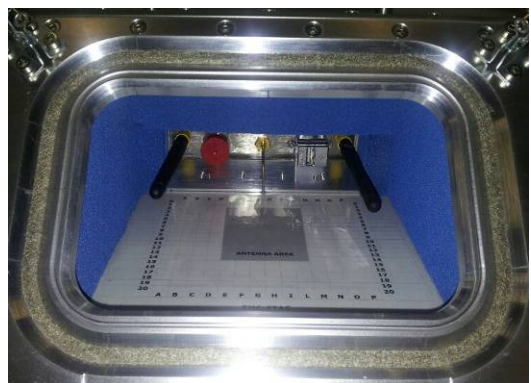
Options



Internal anechoic walls



SH-GLOVE – Silver Fabric Anallergic Shielded Glove



EMC LOG 900-2600 – LTE MIMO – Integrated Wideband Antennas

Information presented is subject to change without notice as product improvements are made. Contact EMCTEST or visit our homepage for current specifications.



FOPT - Fiber Optic Pass Thru



Technical Panels with RF coaxial, USB and DB9 Pass Thrus